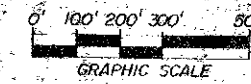


35/88

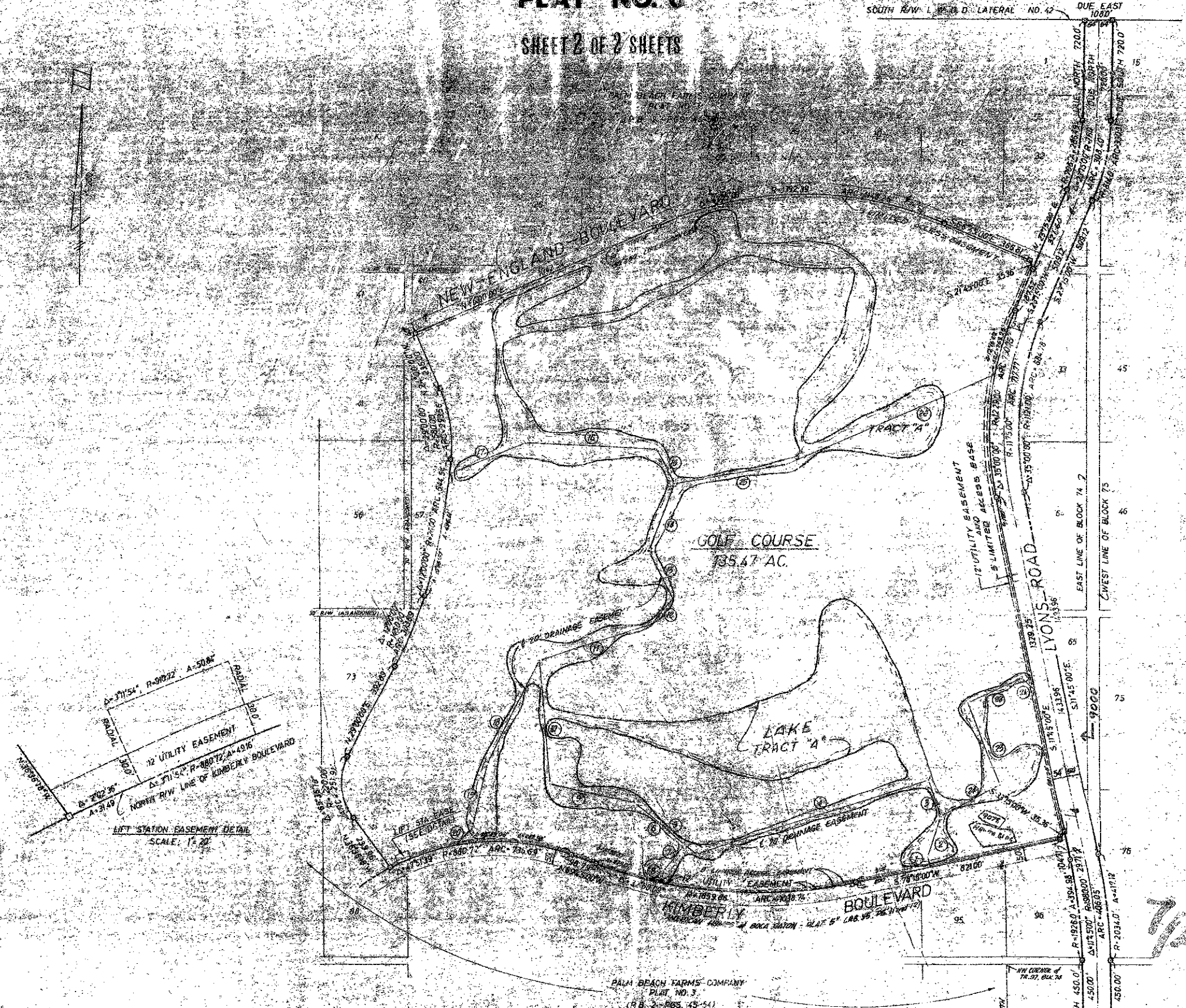
AMERICAN HOMES AT BOCA RATON

PLAT NO. 6

SHEET 2 OF 2 SHEETS

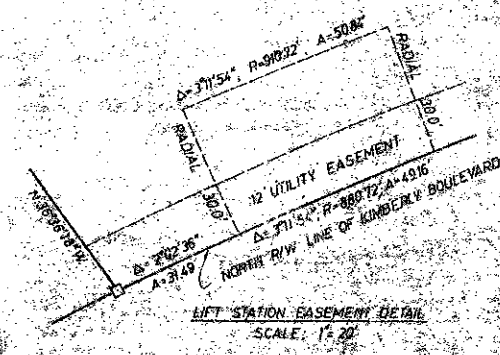


88



CENTERLINE DATA FOR 20' DRAINAGE EASEMENT

NO.	BEARING	DISTANCE
1	N 11°45'00"W	42.00
2	N 12°07'21"E	160.42
3	N 10°33'47"W	141.35
4	S 73°30'00"W	938.57
5	N 51°34'19"W	309.91
6	N 51°34'19"W	253.91
7	S 36°06'40"W	136.88
8	S 11°46'23"W	52.00
9	N 75°55'23"W	341.25
10	N 4°08'15"W	471.23
11	N 70°08'15"E	459.91
12	N 35°57'38"E	126.02
13	N 40°07'32"W	180.92
14	N 24°54'17"E	308.17
15	N 21°48'05"W	161.55
16	N 85°06'05"W	521.54
17	S 85°04'51"W	317.45
18	S 28°27'49"W	404.36
19	S 11°02'44"W	297.51
20	S 45°19'20"W	98.52
21	N 61°20'19"W	595.3
22	S 64°45'34"W	232.17
23	S 27°09'23"E	346.34
24	S 67°35'47"W	265.00
25	N 78°39'54"E	447.73
26	N 67°04'25"E	891.82



0194-306

7/27/42
75
58

THIS INSTRUMENT WAS PREPARED BY ROLF ERNST WEIMER
IN THE OFFICE OF WEIMER AND COMPANY, INC.,
2586 FOREST HILL BOULEVARD, WEST PALM BEACH, FL. 33406

AMERICAN HOMES AT BOCA RATON

WEIMER AND COMPANY
INCORPORATED
planners • land surveyors • engineers
land development consultants